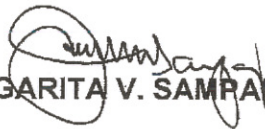


Department of Social Welfare and Development
Protective Services Bureau

INTER – OFFICE MEMORANDUM	File / Ref. DTS/PDS/ IMO/SAMIR-SFP annualreport 131940
Date : February 4, 2014	
FOR : DIRECTOR GEMMA B. GABUYA Policy Development and Planning Bureau	
FROM : THE BUREAU DIRECTOR Protective Services Bureau	
SUBJECT : <i>Supplementary Feeding Program Annual Report for CY 2013</i>	
<p>We are submitting to you the annual report of the Supplementary Feeding Program as of December 31, 2013.</p> <p>Soft copy of the report was sent to pdpb@dswd.gov.ph on 27 January 2014 as an advance copy.</p> <p>Thank you.</p> <div style="text-align: center; margin-top: 20px;"> MARGARITA V. SAMPANG, CESO III</div>	
encl als: annual report of SFP	

Annual Report of the Supplementary Feeding Program for the 3rd Cycle Implementation

Background

The Supplementary Feeding Program is the provision of food in addition to the regular meals to currently enrolled day care children as part of the DSWD's contribution to the Early Childhood Care and Development (ECCD) program of the government.

The food supplementation will be in the form of hot meals to be served during break/snack time in the morning session to children in Day Care Centers (DCCs) and Supervised Neighborhood Plays.

The feeding program is managed by parents based on a prepared cycle menu using available indigenous food supplies. Children beneficiaries were weighed at the start of the feeding and three months thereafter. After the completion of 120 feeding days the improvement and sustenance in their nutritional status will be determined.

The amount of thirteen pesos (php13) inclusive of the rice per child per day for 120 days hot meal feeding is allocated.

Objectives

1. To provide augmentation support for the feeding program of children in LGU-managed DCCs/SNP areas using indigenous foods and/or locally produced food equivalent to 1/3 of the Recommended Energy and Nutrient Intake (RENI)
2. To improve knowledge, attitude and practices of children, parents and caregivers through intensified nutrition and health education, and
3. To improve and sustain the nutritional status of the targeted children beneficiaries.

Supplementary Feeding Program Components

1. **Social Preparation/Team Building-** this involves coordination of the Field Offices to the Local Governments Units for the organization of the Day Care Centers and Day Care Service Parents Groups; conduct of team building activities between LGU and Day Care Workers; and establishing baseline data of beneficiaries.

2. **Measuring and Deworming-** Children beneficiaries will be weighed at the start of the feeding and 3 months thereafter and after the completion of 120 feeding days to determine improvement and sustenance in their nutritional status.

Deworming and determining of children's nutritional status by the Day Care Workers (DCW) in coordination with the Barangay Nutrition Scholars (BNS) or Barangay Health Worker (BHW).

The weight-for-age and height-for-age measurement based on the new World Health Organization Child Growth Standards (WHO-CGS) or the ECCD growth chart shall be used.

3. **Feeding-** Five (5) days a week feeding for 120 days for to the target beneficiaries using locally available foods; Cycle menu as recommended by the Food and Nutrition Research Institute (FNRI), Venue for feeding is the Day Care Center.

Children are taught proper hygiene such as:

- Washing the hands before and after eating
- Table manners and prayer before and after meals etc.
- And simple concepts on health care and nutrition and importance of nutrition for their health and development, among others.

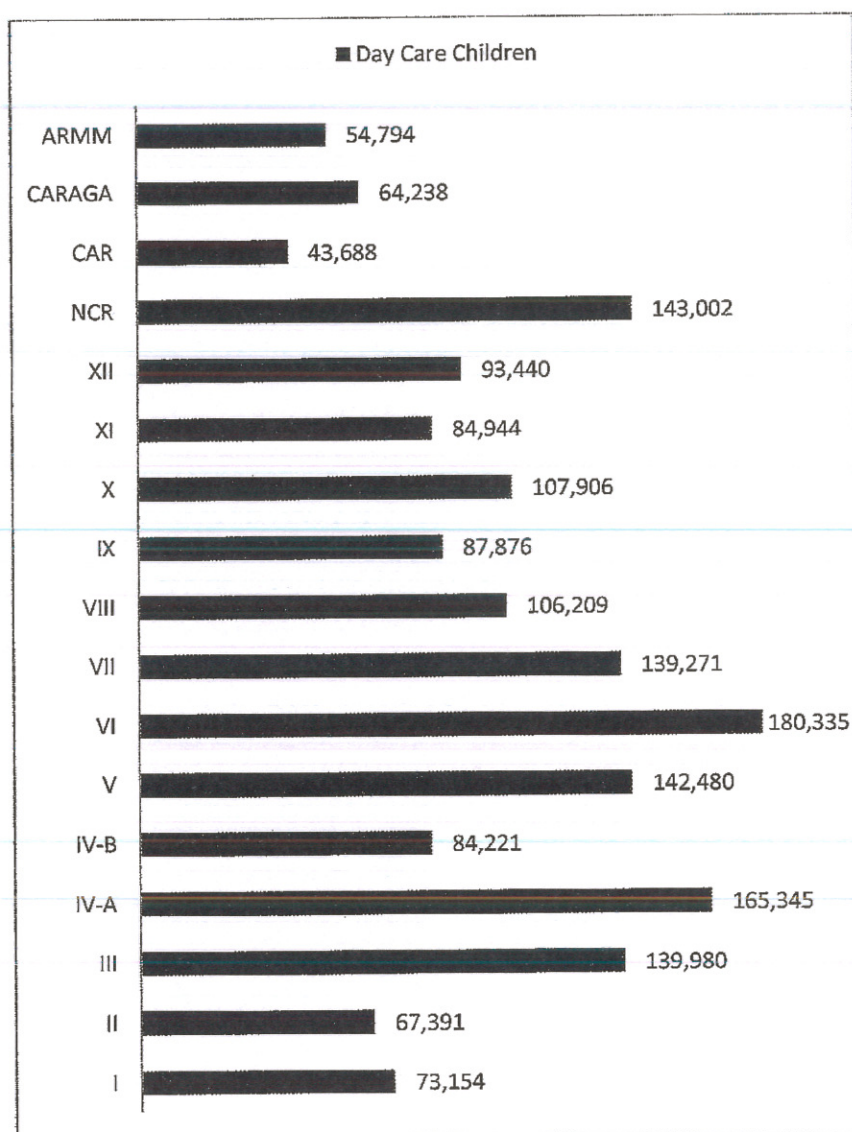
4. **Micro-Nutrients Supplementation-** Provision of Vitamin A before and after the feeding program by the BHW in coordination with the DCW to children in addition to the hot meal.

5. **Parent Effectiveness And Home Care Sessions-** Attendance of parents to all the nine (9) sessions on self, family and parenting, health and nutrition, love of country, home and environment which will be implemented or conducted by LSWDOs;



Regional Physical Targets for SY 2013-2014

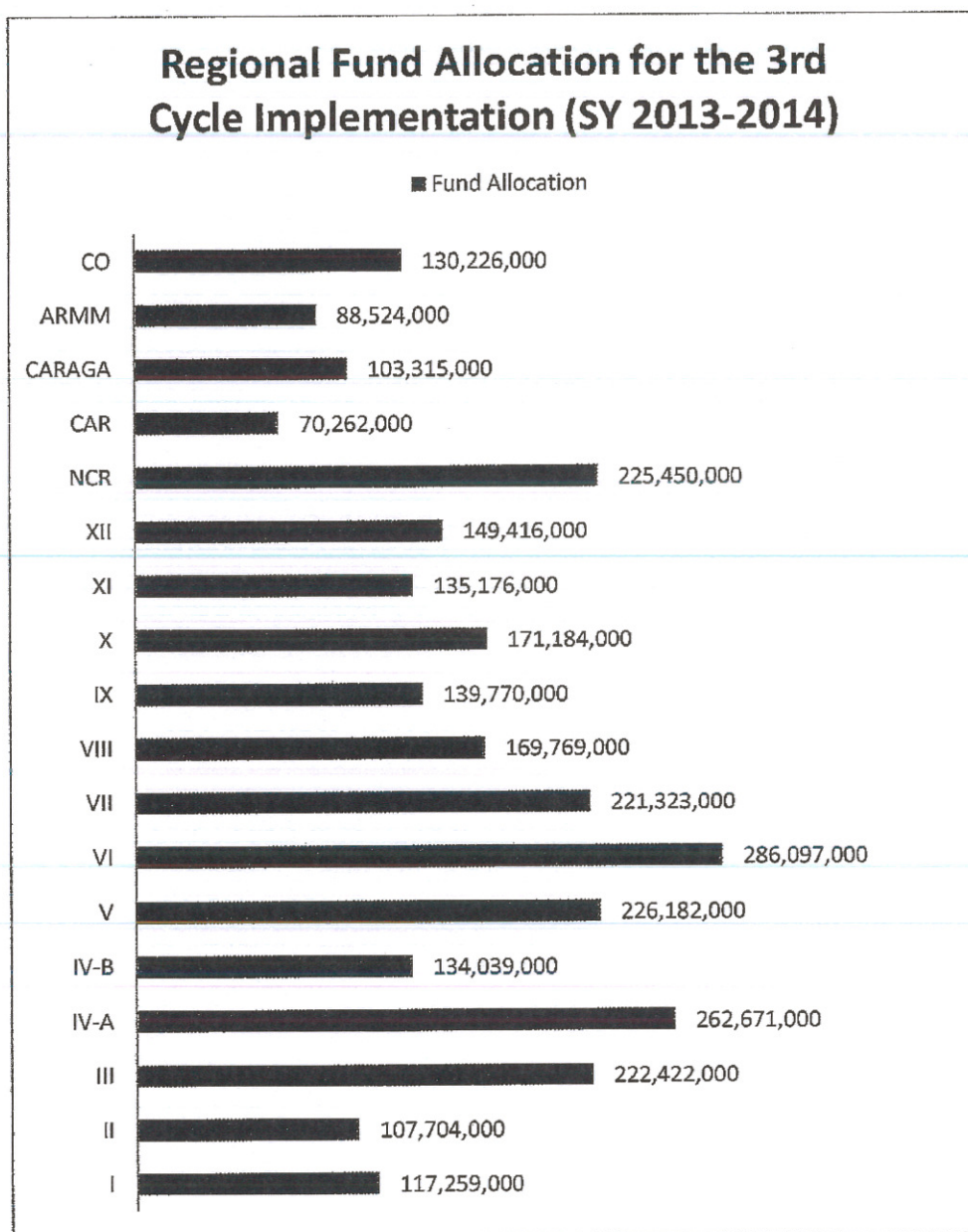
Below is the 3rd cycle implementation of the Supplementary Feeding Program with a total target of 1, 778,274 day care children for the School-Year 2013-2014 in 34, 651 Day Care Centers/Supervised Neighborhood Plays nationwide with equivalent fund allocation amounting to Php2,960,789,000.



The top three (3) regions with the biggest targets for the 3rd cycle are Regions VI with 180,335 children beneficiaries, IV-A with 165,345 children beneficiaries, and NCR with 143,002 children beneficiaries. While Region ARMM has the least number of target children or 54,794 day care children.

Regional Fund Allocation for SY 2013-2014

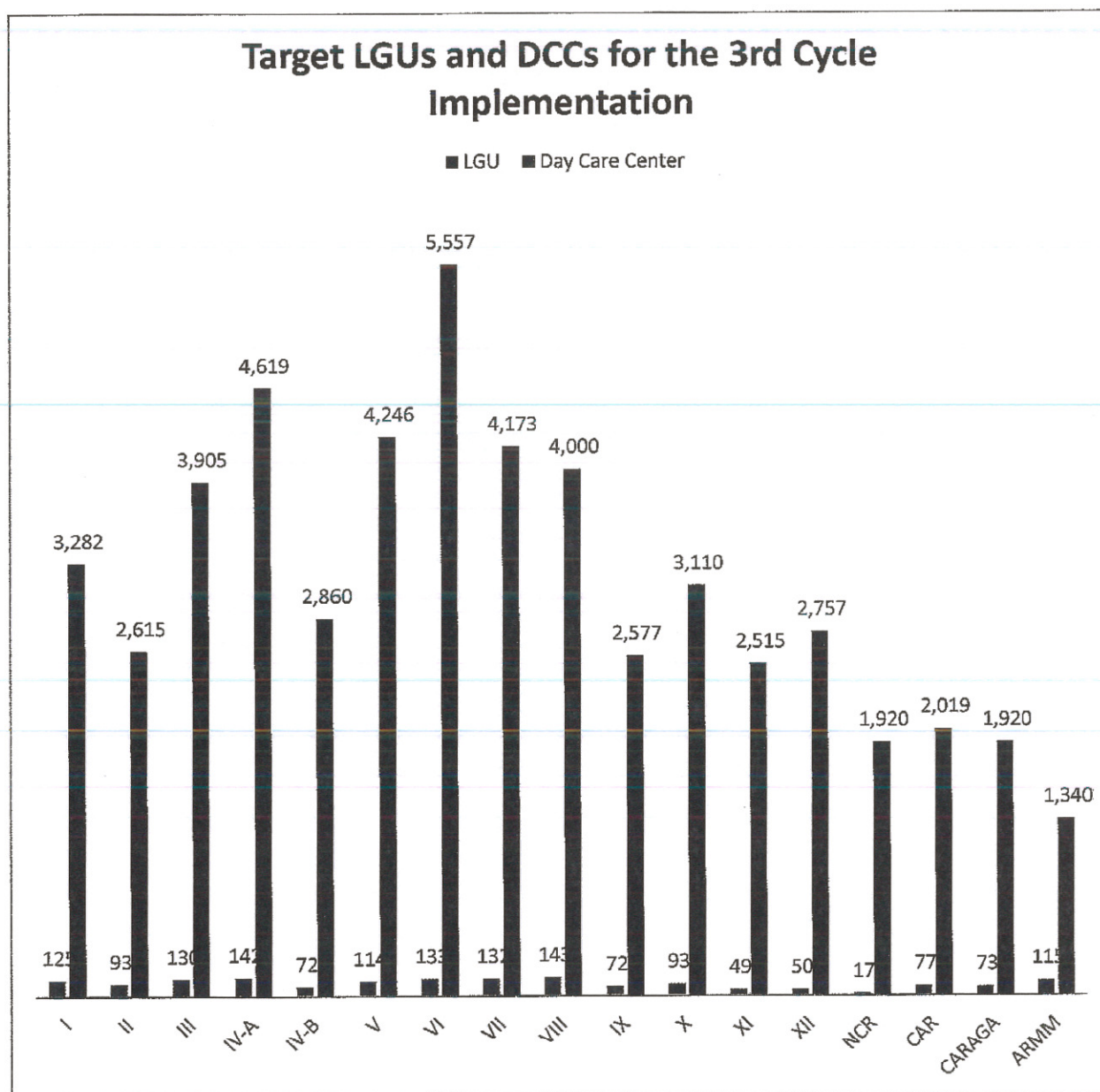
There is a total of PhP2,960,789,000 fund allocation for the Supplementary Feeding Program for the 3rd cycle implementation. From this, P2,830,563,000 was under Direct Release and P130,226,000 was allotted for the Centrally Managed Funds.



Based on the table above, the three (3) regions with the highest fund allocation for this cycle are FO VI with P286,097,000; FO IV-A with 262,671,000 and NCR with 225,450,000 fund allocations.

LGUs and Day Care Centers

Table below depicts the number of LGUs and Day Care Centers per region for the 3rd cycle implementation. It can be noted that region VI has the most number of LGU (5,557-LGUs) followed by region IV-A with 4,619 and region V with 4,246 local government units. Meanwhile, region VIII with 143 DCCs, VI-A with 142 and region VI with 133.



Consolidated National Accomplishment for the 2nd and 3rd Cycle SFP Implementation

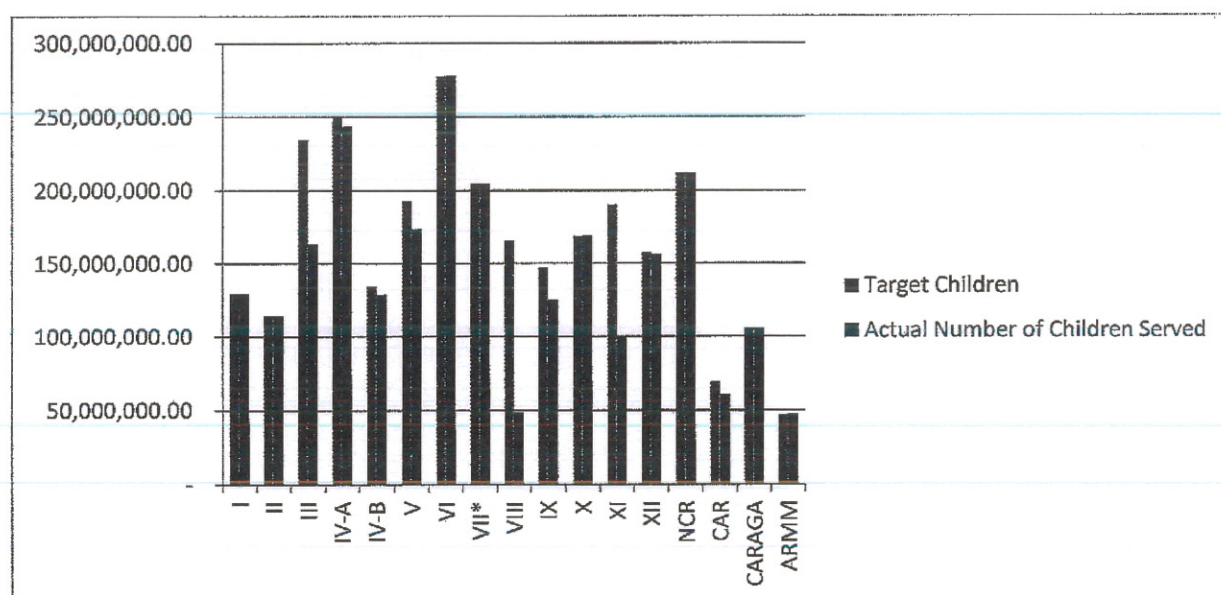
Physical and Financial Accomplishments

Unlike with other programs, the Supplementary Feeding Program is implemented on a School-Year basis and will complete cycle implementation in March of the succeeding year or at the closing of the school days. Hence, only 70% of the total target is targeted to be accomplished at the end of the Calendar Year.

2nd cycle implementation:

A. Physical Accomplishment

For SY 2012-2013, a total of 1,697,697 day care children or 96.7% out of 1,755,034 children were already served as of November 30, 2013. These children are currently enrolled in 53,281 day care centers covered by 1,630 LGUs.

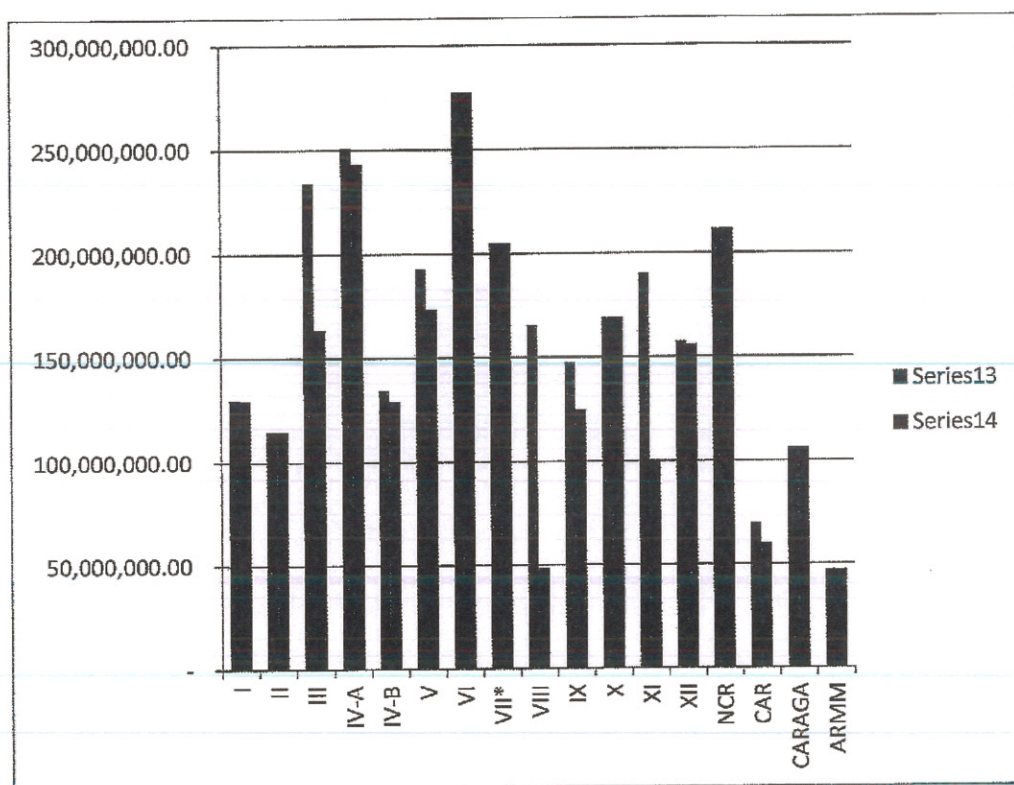


The table shows that most of the regions have had accomplished more than their targets. Region I has the highest accomplishment which exceeds to almost 20% of their targets or accommodated 14,120 additional children beneficiaries. This was followed by region II with a 111.6% physical accomplishment which is equivalent to 7,716 additional children beneficiaries; and third on the list is region VII with a 109.9% of accomplishment or 12,632 additional children beneficiaries served.

On the other hand, regions VIII with a rating of 25%, field office NCR with a rating of 86.2% and field office V with a rating of 86.3 were the least regions to perform for the 2nd cycle SFP implementation. The perennial problem in the liquidation process made the slow implementation of the program. Another reason, there are no suppliers joining the bidding process that paved way to a sluggish movement of the SFP.

B. Financial Accomplishment

For the 2012 Continuing Appropriations, a total of 87.8% or PhP2,461,947,802.82 out of the total allotment amounting to PhP2,881,285,000.00 was transferred by the Field Offices to the LGUs. Field Offices II, VI, VII, X, NCR, CARAGA and ARMM obligated 100% of the continuing funds for the Supplementary Feeding Program.



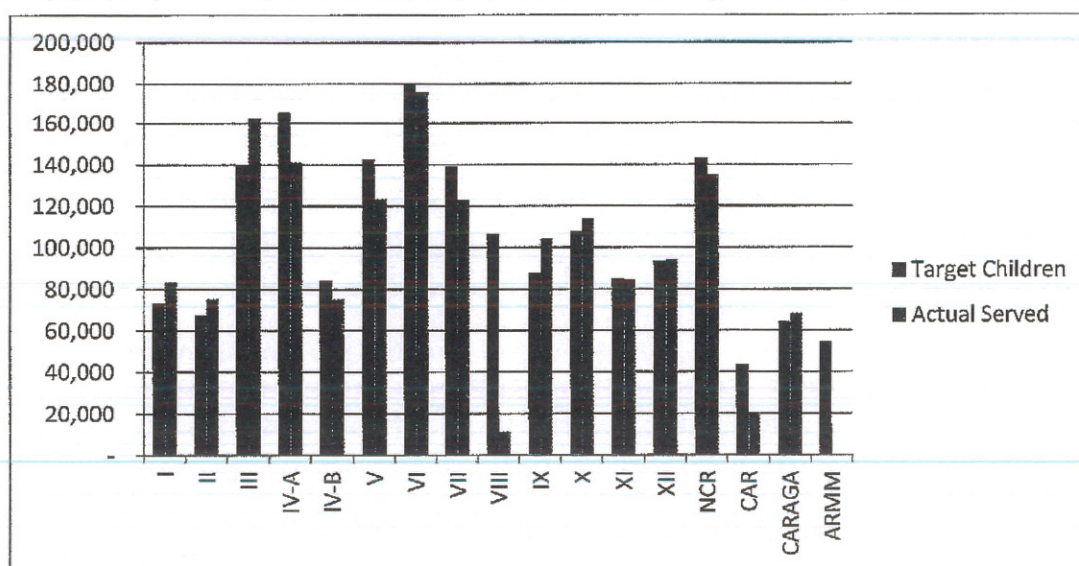
The table shows that seven (7) regions were able to utilize 100% of their funds for the 2nd cycle implementation. The regions that have ensured 100% utilization of their funds were regions II, VI, VII, X, NCR, CARAGA and ARMM. Other regions such as I, IV-A, IV-B, V and XII were able to utilize above 90% of the total funds allotted.

The regions that have low utilization of funds for this cycle were region VIII with a rating of 29.4%, region XI with a rating of 52.8% and region III with a rating of 69.8% due to the perennial problem in the submission of the liquidation process and failure in bidding process.

3rd Cycle Implementation

A. Physical Accomplishment

As of December 2013, out of the 1,778,274 Day Care Children, a total of 1,594,843 beneficiaries were served with Supplementary Feeding Program or 89.7%. Meanwhile, 86.5% or P2,447,755,045 was obligated out of the total P2,830,563,000 fund allocation for CY 2013.



In spite of the armed conflict experienced in Mindanao, still region IX managed to provide supplemental feeding to almost 104,197 day care children or 18.6% higher than their target for the 3rd cycle putting the region on top of the list with the most number of children served with SFP.

With the rating of 89.7% accomplishment, still Field Office I maintains to be on the 2nd highest in the rating with the most number of children served. The region was able to provide SFP to 83,612 day care children or 14.3% higher than their targeted beneficiaries for this cycle.

Region 3 with 111.9% accomplishment placed 3rd rank to provide SFP to children beneficiaries. Region has already accommodated 162,769 day care children in 2,723 day care centers.

The 100% physical accomplishments of these regions can be attributed to their strategy in the implementation of the program e.g. active involvement of the LGUs in the feeding program; recognition for the LGUs who will first finish the 120 feeding days; the earliest LGU to submit liquidation reports etc; and close coordination of FO to the direct implementers.

It can be noted that DSWD-ARMM has not implemented SFP for 3rd cycle because in 2013 they are still implementing the 2nd cycle using the 2012 continuing appropriations. This can be rooted from their unliquidated funds on the previous cycle. The delay in the implementation was due to the delayed submission of liquidation reports.

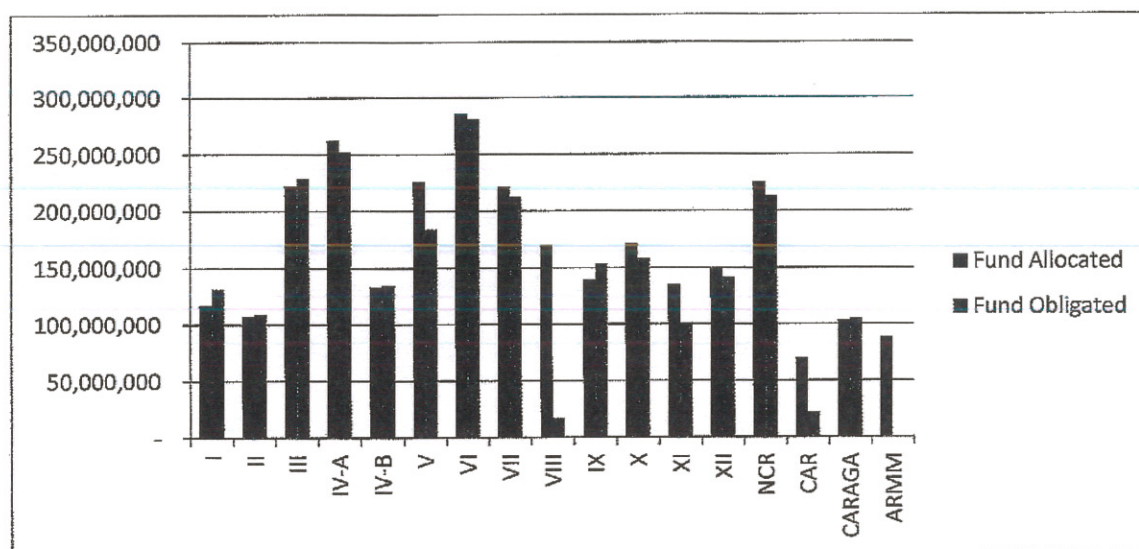
The 10.8% rating or low accomplishment of Field Office VIII can be attributed to the devastation brought by the "super typhoon Yolanda" last year. Currently, FO is resiliently coping up and catching up to increase their 10.8% ratings. Meanwhile the Bureau is working hand-in-hand with FO through provision of technical assistance to the regional staff in implementing their catch-up plan for 2013.

On the other hand, in spite of the disasters that hit our country in 2013, still the FOs managed to deliver the program to their beneficiaries. The devastation of the super typhoon Yolanda in FO VI and FO IV-B did not hamper these regions to achieve their targets. In fact, FO IV-B has a rating of 89.4% and FO VI has a rating of 97.5% accomplishment of their targets.

Bohol, Cebu and other provinces of region VII was shaken by a 7.8 magnitude earthquake was never hindered to deliver the SFP to their children beneficiaries. Region has a rating of 88.4% or 123,122 day care children served in 5,557 day care centers.

B. Financial Accomplishment:

A total of 86.5% or PhP2,447,755,045.00 out of the total allotment amounting to PhP2,830,563,000.00 was obligated by the Field Offices.



The top three (3) regions with the highest fund obligation are the same regions with the highest physical accomplishments e.g. FOs IX, I and III; but Field Office I with a rating of 112.4% was placed on top of the list with the most obligated funds for 2013. Region IX

with a rating of 109.2% named second best to obligate P153,639,295.23 out of their total budget allocation (both Direct Release and Centrally Managed Funds). Region III has obligated P228,449,887 or 102.7% out of their total fund allocation for the 3rd cycle implementation.

Since DSWD-ARMM did not implement Supplementary Feeding Program for 3rd cycle, only the allotted administrative cost was obligated though we are still waiting for the region to submit their financial report.

On the other hand, regions I, II, III, IV-A, IV-B, VI, VII, IX, XII, NCR and Caraga obligated above 90% of the allotment for the Supplementary Feeding Program for the 3rd cycle. These can be attributed to the conduct of the coordinative meetings, forums and consultation dialogues by the FOs to address issues and concerns of the local implementers particularly in the liquidation of fund. Particularly, region III has conducted a consultation dialogue with the provincial auditors, local auditors and treasurers and regional auditors to respond to the perennial issues/concerns and challenges on liquidation process.

Best Practices/Facilitating Factors

1. Establishing a tooth brush area for the promotion of healthy teeth and good hygiene practice that promotes awareness of the child on giving importance of their teeth with child friendly approach.
2. Distribution of streamers/tarpaulins to promote Supplementary Feeding Program and posting it in front of the implementing Day Care Children that is regularly checked by the regional COA.
3. Promotion of backyard gardening or container gardening in the locality.
4. Regular monitoring of the regional SFP staff to LGUs and Day Care Centers to ensure proper implementation and provide technical assistance to the raised issues/concerns identified by the local implementers.
5. LGUs No liquidation, No cash policy.
6. LGUs No liquidation of Day Care Workers, No honorarium.
7. Strong partnership between the Barangay Council, Barangay Health Workers, Barangay Nutrition Scholars and Day Care Workers.
8. Transparency practice of the Day Care Workers in marketing and purchasing of goods.

9. Strict compliance of the parents to attending the monthly Family Development Sessions (FDS) and/or Parent Effectiveness Service (PES) involving the fathers of the day care children.
10. Close coordination of the regional program staff with the financial and auditing personnel at the LGU to avoid lapses and delay release of funds.

Facilitating Factors

1. Strong collaboration, cooperation, coordination with the LCEs and the Barangay councils.
2. Organized and functional Parent's Committees
3. Policies and guidelines of SFP are properly observed and implemented
4. Periodic monitoring and evaluation
5. On time submission of liquidation reports
6. Fund utilization is based on COA rules and regulations
7. Day Care Workers skills in fund management

Issues/Challenges/Concerns

1. The delay in the submission of some day care workers in amount they received from the municipal treasurer having the cash advance affects the continuity of the SF implementation.
2. Only few suppliers join in the bidding process which caused delay in the implementation. In tedious cases (NCR), no suppliers are joining the bidding due to the bulk and wide-range tasks they need to perform/act-on over the School-Year.

Next Steps

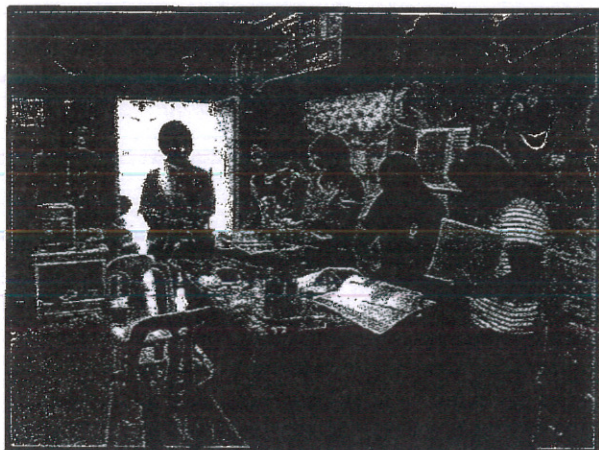
- a. Continuous monitoring and provision of technical assistance to the Field Offices, local government units and implementers towards smooth implementation of the program.
- b. Conduct of Program Implementation Review (PIR) and Evaluation Workshop on Supplementary Feeding Program in March 2014 whose participants are the regional focal person (ND III), the Nutritionist-Dietician I and the Administrative Aide IV.
- a. Conduct of writeshop on the Terms of Reference (TOR) on the School-Based Feeding Program (SBFP) that will be participated in by the Technical Working Group (TWG) of the SBFP; the regional focal person of SFP in FO NCR, III and IV; and DSWD-CO personnel. This writeshop

aims to finalize the Terms of Reference (TOR) for the implementation of the SBFP in CY 2014.

- b. Consolidation of the Nutritional Status Report on children beneficiaries of Supplementary Feeding Program both for the 2nd and 3rd cycle implementation.
- c. Continuous monitoring and provision of appropriate technical assistance to the five (5) priority provinces specifically: Pangasinan (FO I), Quezon City (NCR), Bulacan and Nueva Ecija (FO III), Quezon (IV-A) and Marinduque (FO IV-B) in the implementation of SFP.
- d. Conduct series of coordinative meetings with DepEd for the School Based Feeding Program (SBFP) for CY 2014 and Department of Agrarian Reform (DAR) for the pilot testing of the Partnership Against Hunger and Poverty (PAHP) program in Regions V, VIII and ARMM using the "Zero Hunger" of the Government of Brazil.

Photo Documentation

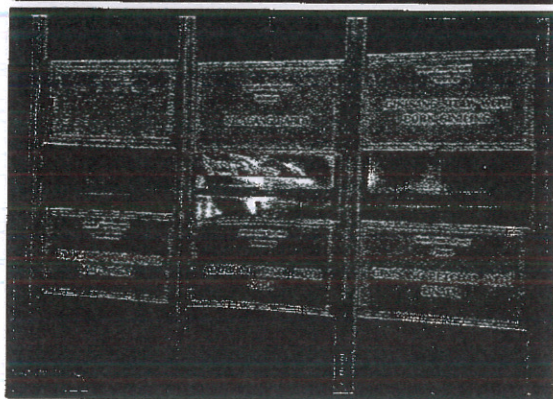
Collection of photos during the actual field visits at the Day Care Centers to monitor the actual implementation of the Supplementary Feeding Program. *(photos provided by Director Violeta T. Mendoza)*



Ms. Violeta T. Mendoza providing technical assistance to local implementers of SFP in Malolos City, Bulacan. With her is Ms. Ma. Eleonor L. Leal.

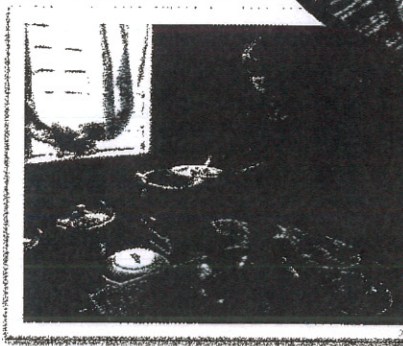
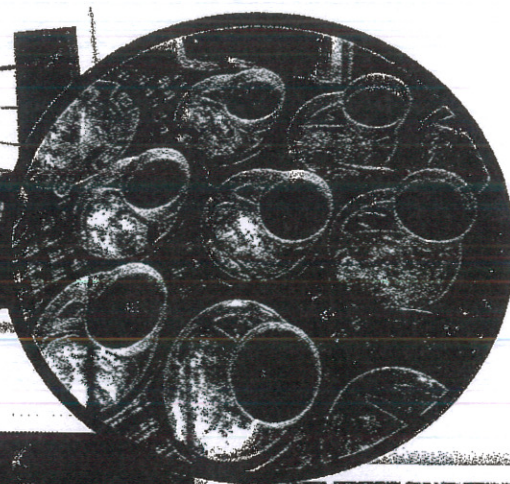


During the conduct of Parent Effectiveness Service (PES) in San Miguel Bulacan presided by the Rural Health Unit Officer with the topics: Handwashing, Dengue and Nine (9) steps about Parenthood.

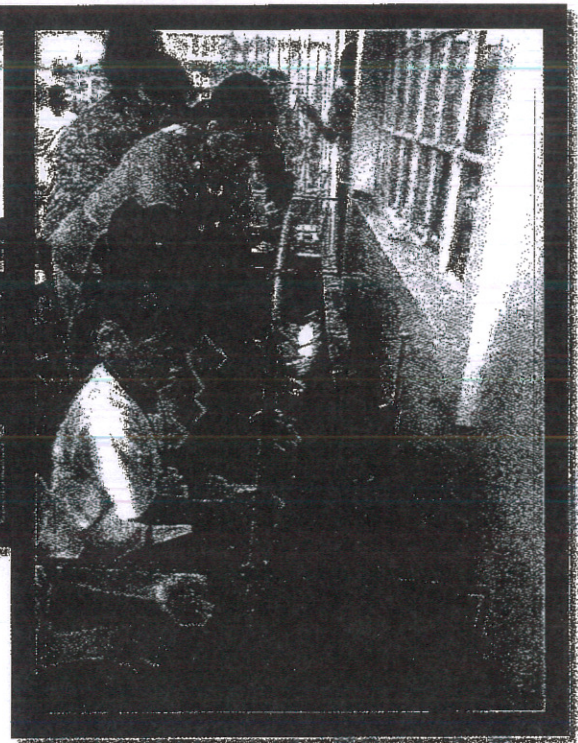


In the picture is the cycle menu in one of the day care centers in Tagaytay City. Usually, the cycle menu that has been enhanced by the LGU and is monitored/controlled based on the FNRI-DOST cycle menu.

Actual cooking and food preparations. In picture #1, the Day Care Center prepared Tinolang Manok served with rice (Hot Meal). Picture #2 shows the parent on-duty doing the kitchen chores. Usually DCCs in rural areas used firewood in cooking. The last photo depicts the proper/ideal way on how food should be prepared.




Actual photos of children in day care centers enjoying the served hot meals.




The considered best practices of the implementers. The construction of a hand washing area where children are taught on the proper ways of hand washing and its significance to health nutrition. In photo #2, Children beneficiaries praying before meals led by the day care worker.

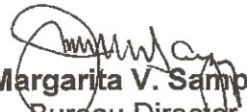
Prepared by:


Ms. Irish M. Opeña
SFP Focal Person

Noted by:


Ms. Pacita D. Sarino
Assistant Bureau Director and
Concurrent CBWDPD Division Chief

Approved by:


Ms. Margarita V. Sampang
Bureau Director

MVS/DTS/IMO/samir-SFPannualreport2013